

COUPE A-A et B-B - ECH. 1/100




31/03/2023

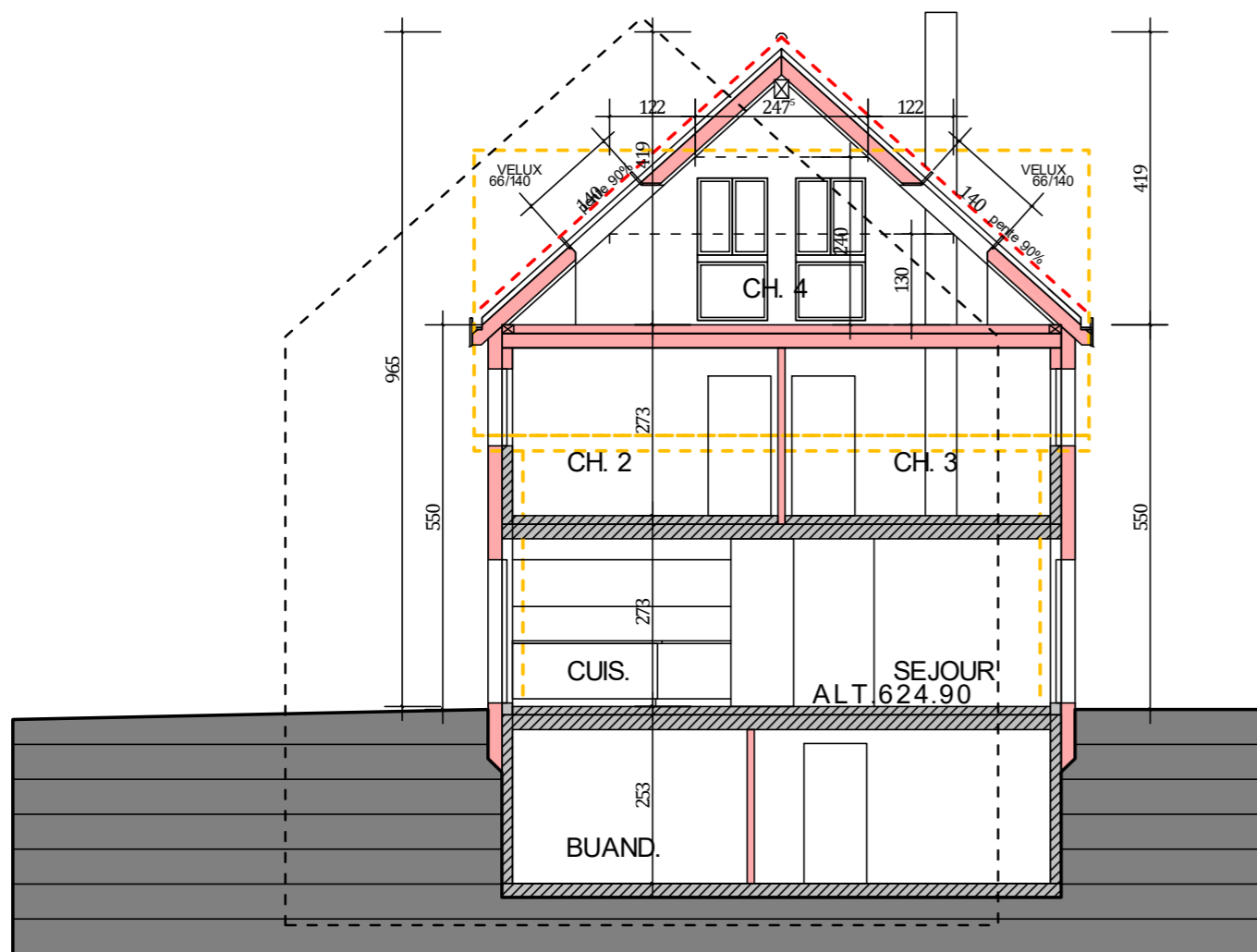
FORMAT A3

POINTZERO ARCHITECTURE SARL - J. LEBET ARCH. EPFL - GRAND'RUE 7 - 1510 MOUDON
TEL. 021 / 905 6525 - FAX 021 / 905 6526 - EMAIL pointzero@pointzero-architecture.ch

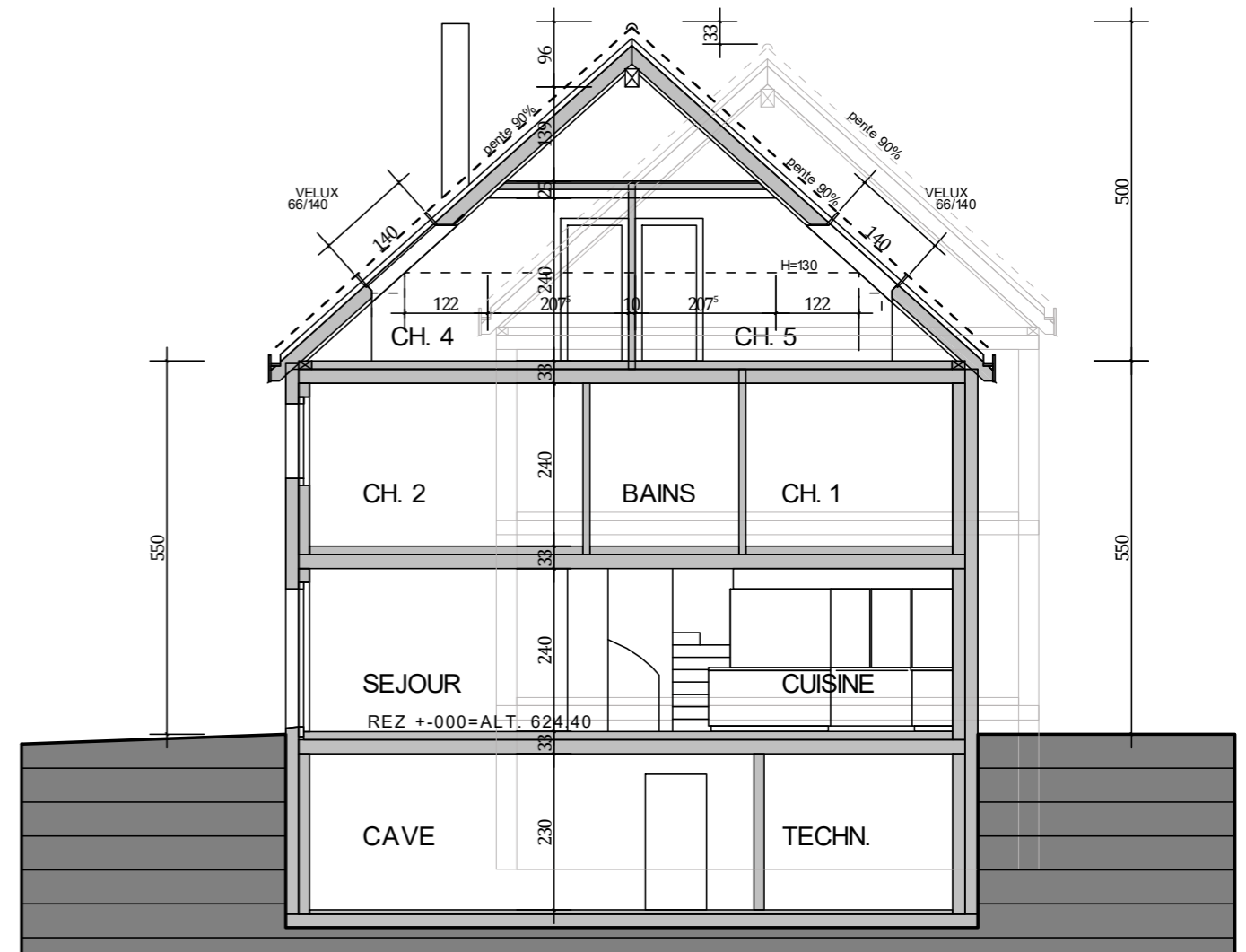
LE PROPRIETAIRE :

L'ARCHITECTE :

-  EXISTANT
-  A CONSTRUIRE
-  A DEMOLIR



COUPE B-B SUR HABITATION EXISTANTE - ECH. 1/100



COUPE A-A SUR NOUVELLE HABITATION - ECH. 1/100